

General Specifications:

Total Fixture Output: 6 klm

Light Engine Output: 15 klm

Efficacy: 12 Lumen/Watt

Lens Option: N/A

Zoomrange: 12-36°

CRI: 80+

CQS: 85+

TM-30 Rf: 80+

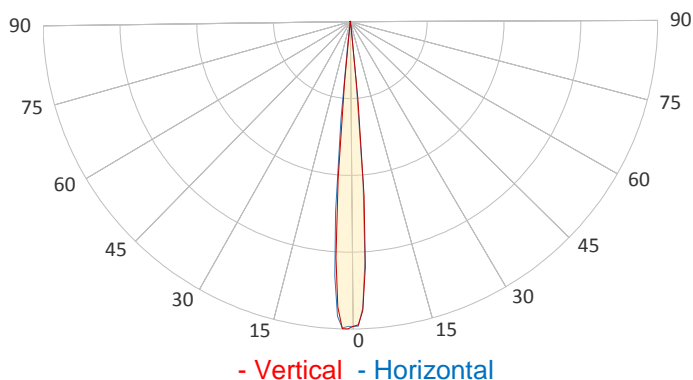
TM-30 Rg: 105+

TLCI: 80+

Color Temperature: 6500 K



Measurement



Catalog Number: 90250025HU

Measured Output: 5266 lm

Measured Peak: 163090 cd

Consumed Power: 430 W

Efficacy: 12.2 Lumen/Watt

Beam Angle (50%): 9.4°

Field Angle (10%): 12.1°

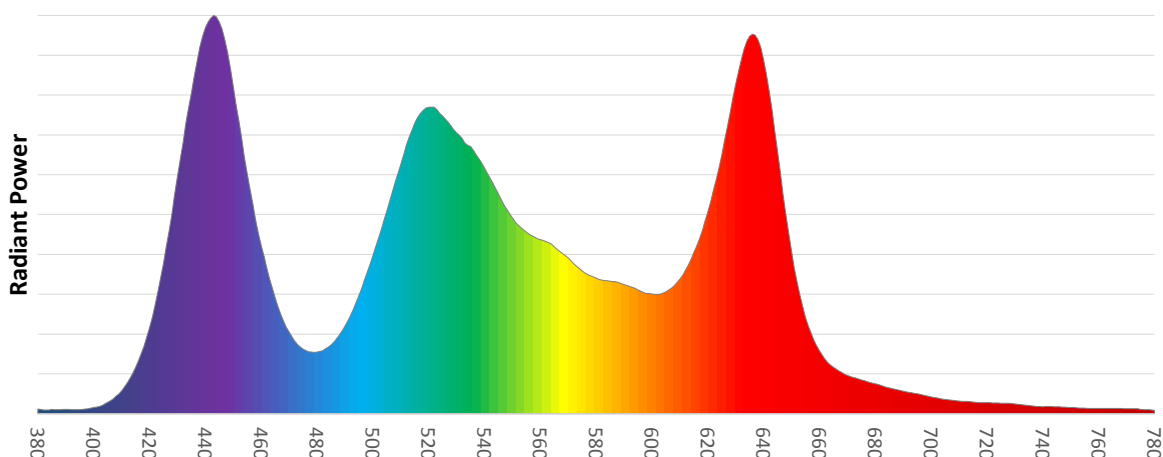
Cutoff Angle (3%): 13.6°

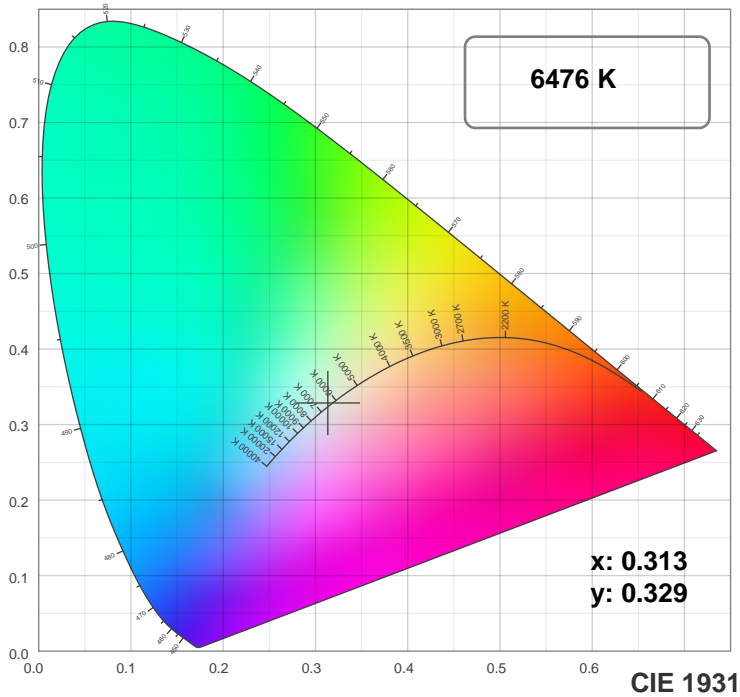
Measurement Condition:

Ambient Temperature: 25 +/- 5C

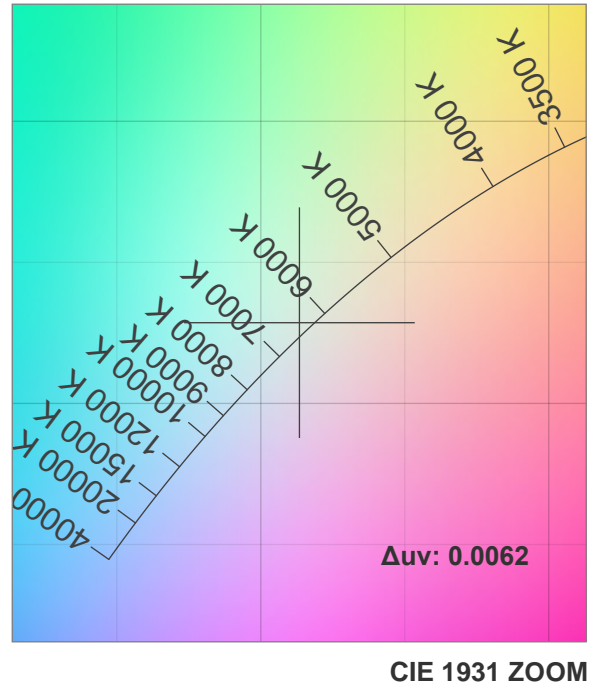
AC Supply: 230V/50Hz

Spectral distribution

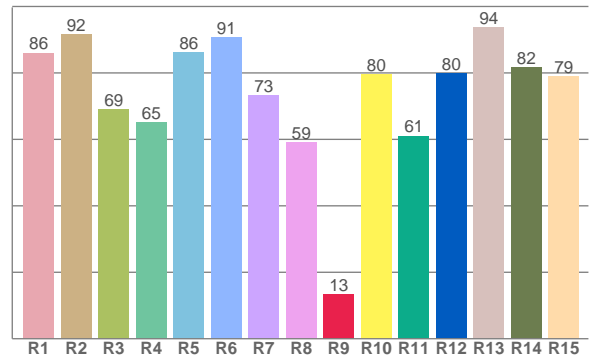
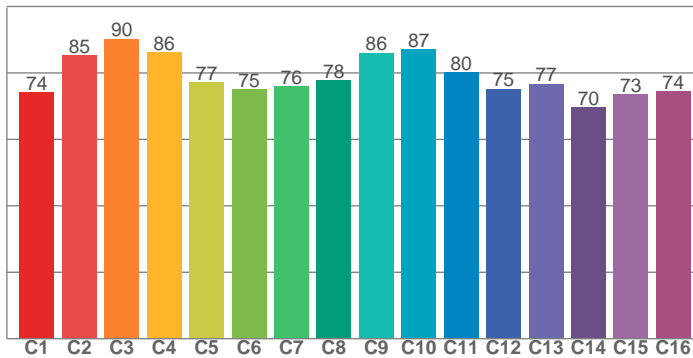




TM30: 79.7



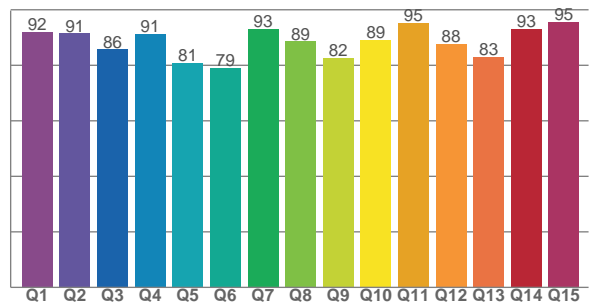
CRI: 77.6 (R1-R8)



Color Parameters

Color Temperature	Color Rendering Index	Red Component	Color Fidelity	Color Gamut
CCT	CRI	CRI R9	TM30 Rf	TM30 Rg
6476 K	77.6	13.3	79.7	113.9

CQS: 87.5



Television Lighting Consistency Index	Color Quality Scale	Color Coordinate CIE 1931	Color Coordinate CIE 1931	Color Coordinate CIE 1964	Color Coordinate CIE 1964	Color Diviation from Black Body
TLCI	CQS	x	y	u	v	Δuv
80+	87.5	0.313	0.329	0.198	0.312	0.0062

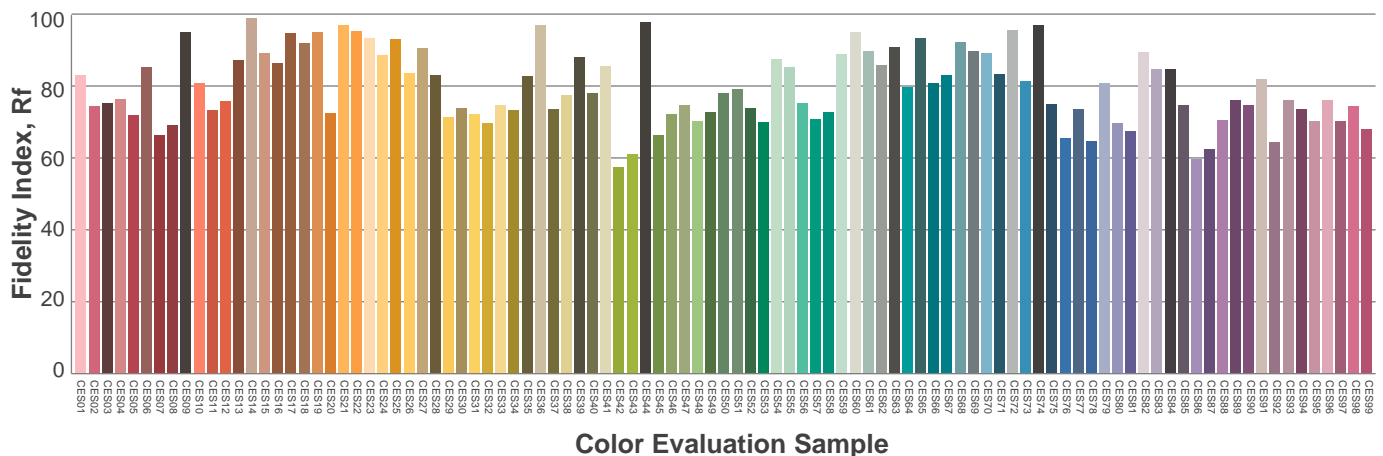
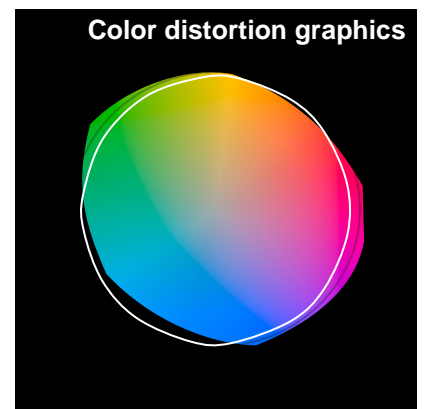
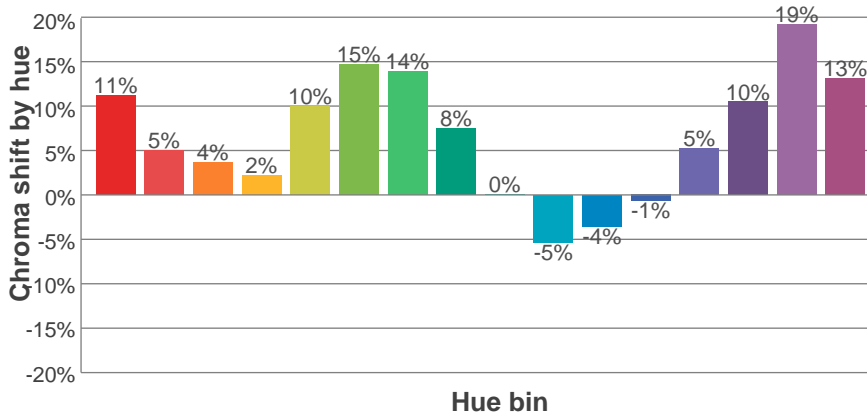
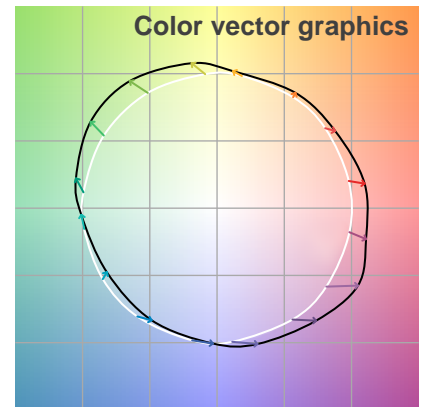
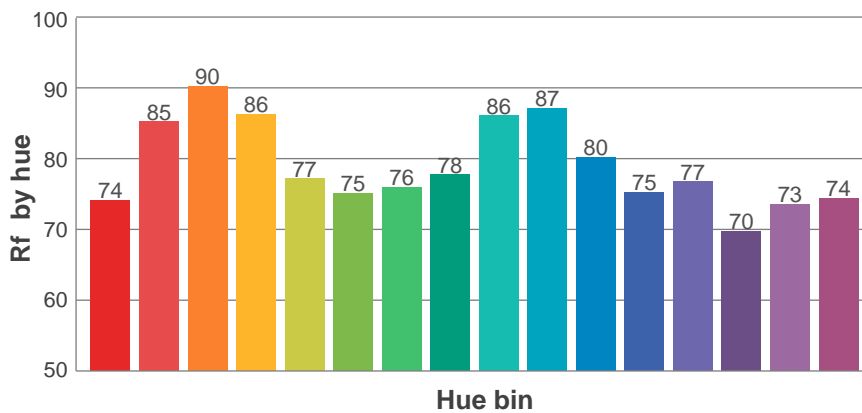
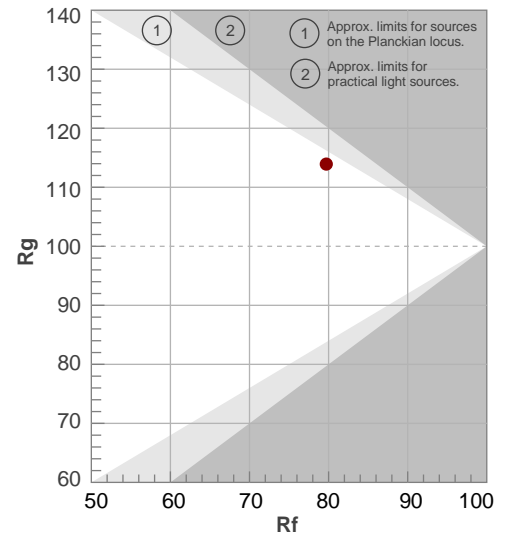
Rf 79.7

Fidelity index Rf

Rg 113.9

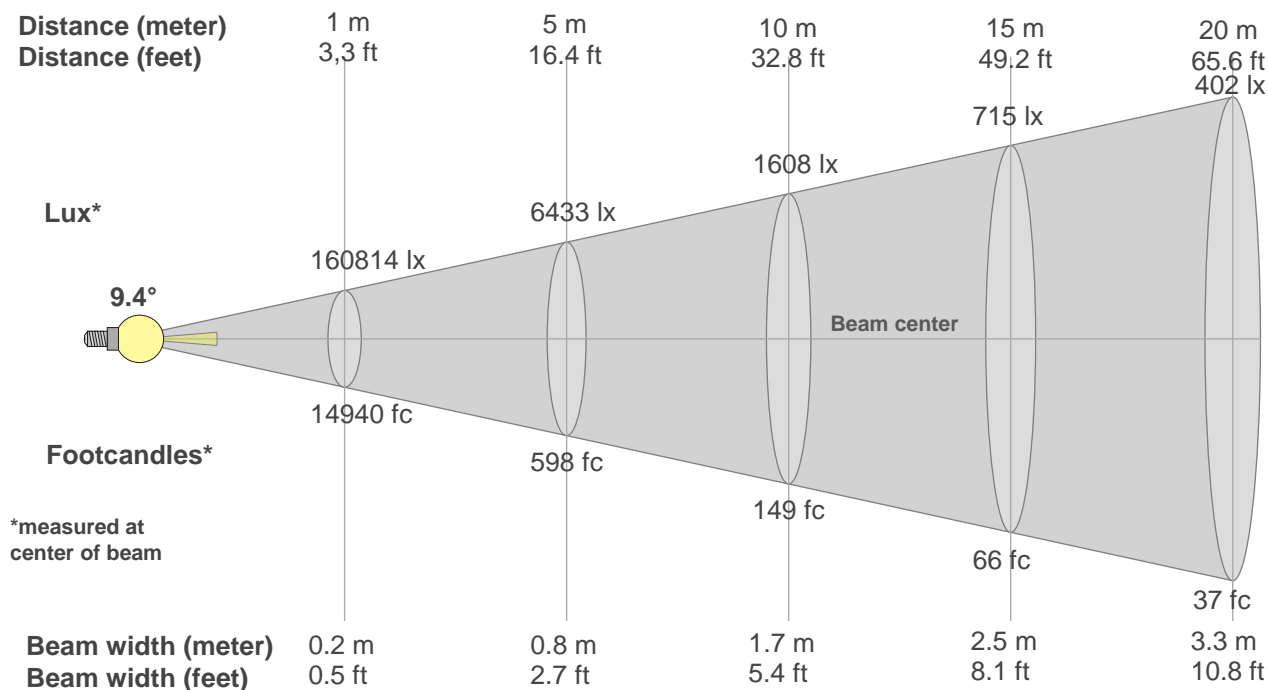
Gamut index Rg

Hue Bin	R _f	Graphic shifts (%)	
		Chroma	Hue
1	74	11%	-4%
2	85	5%	-6%
3	90	4%	0%
4	86	2%	7%
5	77	10%	8%
6	75	15%	6%
7	76	14%	-3%
8	78	8%	-9%
9	86	0%	-11%
10	87	-5%	-3%
11	80	-4%	10%
12	75	-1%	16%
13	77	5%	18%
14	70	10%	14%
15	73	19%	14%
16	74	13%	-3%



Beam Details

MAC Allure Wash PC – Narrow



Beam width:

Beam luminous intensity formula:

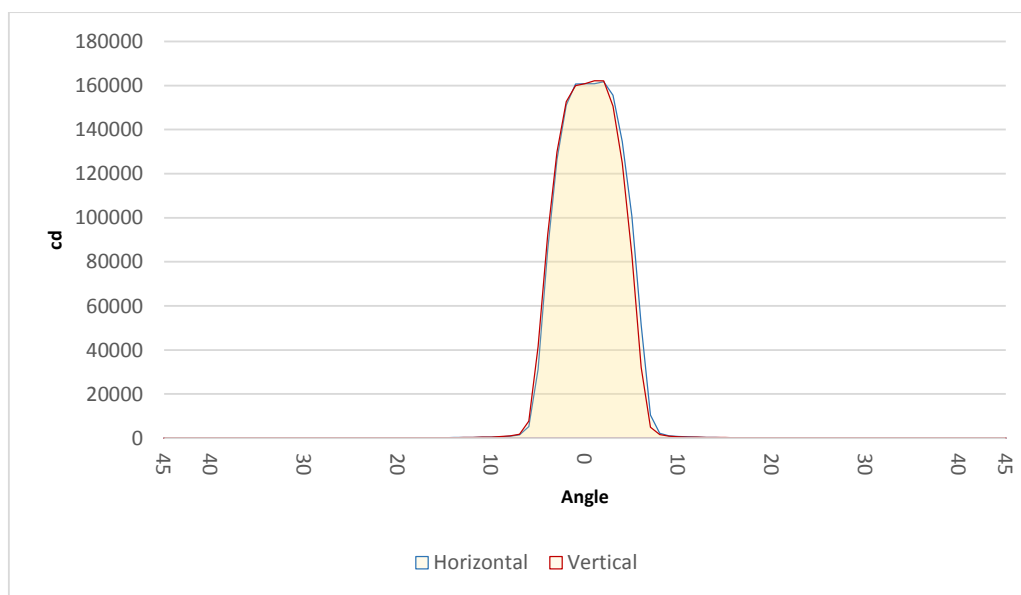
$$w = 0.2 * \text{distance}$$

$$\text{lux} = 160814 / (\text{distance}^2) \text{ (where distance is in meters)}$$

$$\text{fc} = 160814 / (\text{distance}^2) \text{ (where distance is in feet)}$$

Beam illuminance from 1-20m

1m	2m	3m	4m	5m	6m	7m	8m	9m	10m	11m	12m	13m	14m	15m	16m	17m	18m	19m	20m
3.3ft	6.6ft	9.8ft	13.1ft	16.4ft	19.7ft	23ft	26.2ft	29.5ft	32.8ft	36.1ft	39.4ft	42.7ft	45.9ft	49.2ft	52.5ft	55.8ft	59.1ft	62.3ft	65.6ft
160814lx	40203lx	17868lx	10051lx	6433lx	4467lx	3282lx	2513lx	1985lx	1608lx	1329lx	1117lx	952lx	820lx	715lx	628lx	556lx	496lx	445lx	402lx
14940.1fc	3735fc	1660fc	933.8fc	597.6fc	415fc	304.9fc	233.4fc	184.4fc	149.4fc	123.5fc	103.8fc	88.4fc	76.2fc	66.4fc	58.4fc	51.7fc	46.1fc	41.4fc	37.4fc



Beam angle 50%	Field angle 10%	Cutoff angle 3%
9.4°	12.1°	13.6°